

## BENEFITS OF COLOURMIX

- Colourmix colours are manufactured by Oxerra using Oxerra's pigments.
- Colourmix pigments are weather resistant, UV light stable & alkali stable.
- Colourmix is recommended for use in concrete and cement applications.
- Packaging is designed to eliminate dust exposure and allow for safer handling practices by the end user.
- Manufactured under a strict quality control regime by Oxerra, an ISO9001 quality accredited company.
- These colours do not contain carbon black or any ingredients unsuitable for use in concrete & cementitious applications. They are not classified as hazardous according to the Globally Harmonized System (GHS).
- Nationwide customer service, sales experts, technical support and distribution.



## FINISHING

Concrete integrally coloured with Colourmix oxides can be finished in many different ways to achieve a variety of different looks to suit any project. Common coloured concrete finishes include cove trowel, broom, exposed aggregate, honed 'first grind', polished, sand blasted, stamped, acid etched and burnished.

The applied finish greatly influences the resulting concrete colour.

Unsealed cove trowel and broom finishes may produce a lighter finish than the swatches shown. Similarly, more heavily worked or burnished finishes may result in a darker finish.

Colourmix coloured concrete can be sealed with traditional concrete sealers.

## PACKAGING

Colourmix colours are supplied in our "Aquasac" cold-water soluble packaging system. Our Aquasac bags are made from the highest quality, market leading poly vinyl alcohol film and they are the only universal packaging system recommended for all concrete mix designs and finishes. Aquasac bags are ideal for even the most demanding concrete applications and finishes including shotcrete, exposed aggregate, etched, honed and polished finishes.

## SPECIFYING A COLOUR

To specify a colour simply specify the name of the Colourmix colour overleaf. All colours shown are based on concrete using grey cement. Identify your required concrete strength (MPa). For a detailed specification to incorporate into tender documents please contact a member of our sales team.

## PRODUCT DISCLAIMER




These Colourmix swatches are provided as a guide. If colour selection is important for your project then we strongly recommend that your contractor produces a site sample using all the intended concrete raw materials, finishing and curing techniques.

These swatches are indicative representations of concrete samples produced in our laboratory. Concrete placed on site can look lighter over a large area than a colour swatch or small concrete 'biscuit'. The finished coloured concrete can be greatly influenced by the source and consistency of concrete raw materials (some naturally occurring) including water content. In addition, finishing techniques, site practices, weather, curing conditions and subsequent efflorescence may also produce colour variation.

For further assistance please contact your local Oxerra Territory Manager or reseller.



T +61 (0) 2 9336 1000  
australasia.oxerra.com  
colourmix.com.au

 [www.facebook.com/OxerraAustralasia](https://www.facebook.com/OxerraAustralasia)  
 [www.instagram.com/colourmix\\_for\\_concrete](https://www.instagram.com/colourmix_for_concrete)  
 [www.linkedin.com/company/8002108](https://www.linkedin.com/company/8002108)

GLOBAL | SUSTAINABLE | MANUFACTURER | RELIABLE | ETHICAL | ACCREDITED | INNOVATIVE | EXPERTISE



COLOURS  
for concrete







Suede (1)



Ginger (1)



Havana (2)



Jabiru (2)



Cappuccino (1)



Sandstone (1)



Taupe (1)



Flint (1)



Frost (2)



Dolomite (2)



Silk (2)



Soapstone (1)



Arctic (2)



Shadow (1)



Silver (1)



Platinum (1)



Onyx (1 x 9kg)



Black Knight (1)



Charcoal (1)



Bluestone (1)



Black (2 x 9kg)



Emperor (2)



Jet Black (2)



Black Velvet (2)



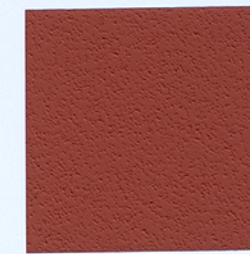
Pumpkin (1)



Turmeric (1)



Ravine (1)



Desert Red (2)



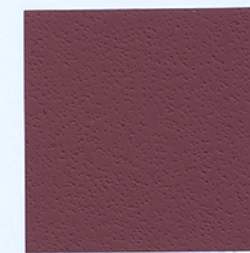
Limestone (2)



Sepia (1)



Peppercorn (1)



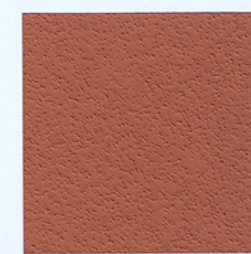
Venetian (2)



Fremantle (1)



Horizon (2)



Vesuvius (1)



Everglade (1)



Papyrus (1)



Arizona (1)



Colonial Red (1)



Leaf Green (1)



Aztec (1)



Spice (1)



Red Rock (2)



Marl (2)



Pumice (1)



Cargo (1)



Terracotta (2)



Caribbean Blue (1)